

Inside this issue:

	Page
Monty Roberts Visits HorseWorld	1
Carol Service review	1
How You Can Help this Spring	2
Welcome to our new volunteers	2
Discovery goes from strength to strength	3
REPLY SLIP	4

A Very Special Visitor

A happy new year to all HorseWorld volunteers!

2012 is a special year for HorseWorld, as we celebrate our 60th year. Events to mark the anniversary began back in November, when we were privileged to receive a visit from the legendary 'horse-whisperer' Monty Roberts.

The internationally renowned horse trainer and creator of the technique 'join up' spent a day with staff, volunteers and trustees, finding out more about our



Monty Roberts meets Buddy at the visitor centre

work and meeting some of our rescued animals.

In the afternoon, Monty joined volunteers for tea and cake in the visitor centre café where he participated in a question-and-answer session. It was an interesting and memorable day and a

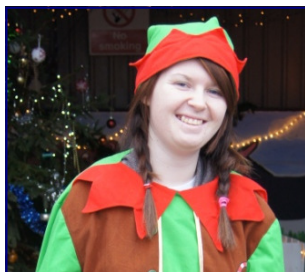
great way to launch our 60th year.

Thank you to everyone who sent in ideas and suggestions for marking this landmark anniversary. We'll get back to you with our plans soon!



Monty joins volunteers on a tour around the yard

Carol Service Success



Gabbi Martin gets into character in the grotto

HorseWorld's annual fundraising Carol Service took place on 4th December last year. With over two thousand visitors on the day, the event proved more

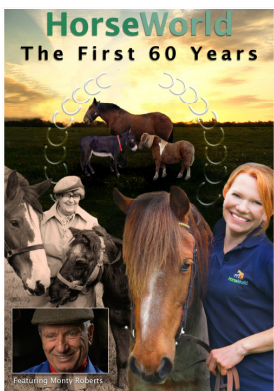
popular than ever! On such a busy day we were very grateful for the support of our volunteers in helping to run the event. Thirty-five of you were busy in a variety of roles all around the site from the car parks to the café. Others did a great job in collecting donations and selling raffle tickets. The volunteer team in the grotto saw a constant stream of visitors and kept up their festive

cheer all day. Proceeds from the event came to an amazing £6,669 which made all the hard work worthwhile and would have been *impossible* without you!



The well attended service in the shire horse barn

If you can help with any of the activities listed here, please see the back page to contact our volunteer co-ordinator or return the reply slip. Thank You!



HorseWorld anniversary DVD now available to you at discounted price – see flyer enclosed

Thank you to volunteers who supported the fundraising event at our local ASDA store before Christmas. You raised £118 in donations. Well done to you all!



How You Can Help!

Volunteer Opportunities This Spring

Half Term Holidays:
Mon 13th February-
Fri 17th February
&
Easter Holidays:
Monday 2nd April-
Friday 13th April

Cafe assistants are needed in the visitor centre cafe on week days from **11.30 - 2.30pm**. Volunteers will help by clearing tables, wiping trays and carrying out food

to customers. A polite and friendly manner is required, as is an ability to help as part of a small team.

Membership assistants are needed to run the members' admission desk, located in the 'Birthday Party' room at the visitor centre. Volunteers will help in pairs, by welcoming members and processing any new

membership cards. This is a straightforward, seated role, for volunteers who enjoy a 'visitor services' role with the public. No cash handling involved. Hours are **10.00am—2.00pm**.

If you're interested in either of these roles, please get in touch with your available dates.

Other Vacancies



Do you have experience of buying or selling items on Ebay? To raise funds we're looking for a competent Ebay user to oversee the online auction of a collection of china plates and some stable rugs. This would be carried out from HorseWorld premises. The role involves photographing & uploading pictures of items and

posting out anything sold.

Mailing Helpers - regular monthly role! If you're looking for a straightforward, seated role, alongside other volunteers, this is for you! Starting in February we'll be looking to recruit a group of volunteers **every month** to put letters in envelopes and help frank them. Approx 2-3 hours, but days may vary.

Do you have good keyboard skills, experience of using a database and an eye for detail? We're currently looking for a **database assistant** in the office on Mondays or Fridays. You'll help process customer orders and keep our mailing list up to date.



Welcome To Our New Volunteers!

Since the Autumn issue of Helping Hooves, the following new volunteers have joined us. A very warm welcome to all!

- Carly Dewberry
- Alicia Stevens
- Kathryn Everett
- Hannah Jones
- Francis Roy
- Nadya Porter
- Mich Hardingham
- Gabbi Martin
- Kirsty Sims
- Daniel Healey

Discovery Goes From Strength To Strength

HorseWorld's *Discovery* programme was launched as a pilot in 2010, since when it has gone from strength to strength.

Just last month, *Discovery* was delighted to welcome the Vice Chair of Bath & North East Somerset Council, Rob Appleyard. He met some of the successful young people who have completed the programme, and presented them with awards recognising their achievements.

Discovery courses take place in the working equine environment of HorseWorld's Welfare Yard. They use horses as a unique tool in a series of highly interactive sessions to provide multi-sensory teaching, promoting learning and emotional growth.



The programme provides a safe, supervised, hands-on curriculum of activities, outside the established classroom environment.

Discovery is aimed at young people aged six to nineteen who may be outside mainstream schooling due to learning disabilities or behavioural difficulties (or at risk of under-achieving). Many,



above: Councillor Rob Appleyard, meeting *Discovery* course participants at HorseWorld

but by no means all, may come from dysfunctional and chaotic backgrounds. *Discovery* can have particular benefits for young people within the autistic spectrum and those with Attention Deficit Hyperactivity Disorder.

Discovery Manager Amanda Cranston says: "Using rescued horses to help young people is an exciting concept which has positive benefits for both animal and child. The horse, being cared for in a calm environment, is a unique tool to promote emotional growth and learning, helping young people experience increased commitment, concentration and communication."

The experience of *Discovery* tutors working with young people shows:

- those who struggle to communicate can find working with horses helps them learn about themselves, so they can

interact more positively with others

- those who find it hard to concentrate or to control their impulses can focus on a horse for long periods while grooming or leading the animal
- withdrawn students often begin to express themselves, developing words or gestures they haven't previously used.

Discovery is run with the support of volunteers, who not only help prepare and handle the horses, but who also lend valuable support by motivating and encouraging course participants.

To find out more about *Discovery*, and to watch a video about the project, go to www.horseworld.org.uk/discovery

To find out about becoming a *Discovery* volunteer please contact

frances.mallender@horseworld.org.uk

REPLY SLIP

Please detach this entire page and return to us in the envelope provided. Alternatively, please phone or email our volunteer co-ordinator (details at bottom of page).

Volunteer Name:

School Half Term Week: Mon 13th February- Fri 17th February

Membership assistant

Cafe assistant

I am available on the following dates

.....

School Easter Holidays: Monday 2nd April- Friday 13th April

Membership assistant

Cafe assistant

Please tick for further details about the following roles:

Database Assistant

Ebay Assistant

Discovery Assistant

Membership Renewal Mailing Assistants

I am interested in helping with large membership mailings. Please contact me with further details.

Get In Touch!

If there is anything you would like to see appear in this newsletter, or if you have comments or queries about any aspect of volunteering at HorseWorld, please contact:

Frances Mallender, Volunteer Co-ordinator
 Tel: 01275- 893039
 Email: frances.mallender@horseworld.org.uk

HorseWorld is the leading UK equine charity, working on behalf of neglected and abused horses, ponies and donkeys.

HorseWorld, Keynes Farm, Staunton Lane
Whitchurch, Bristol, BS14 0QL
www.horseworld.org.uk

